



WellChild 
the national charity for sick children

the national charity for sick children

In association with
www.caringfamiliescic.co.uk

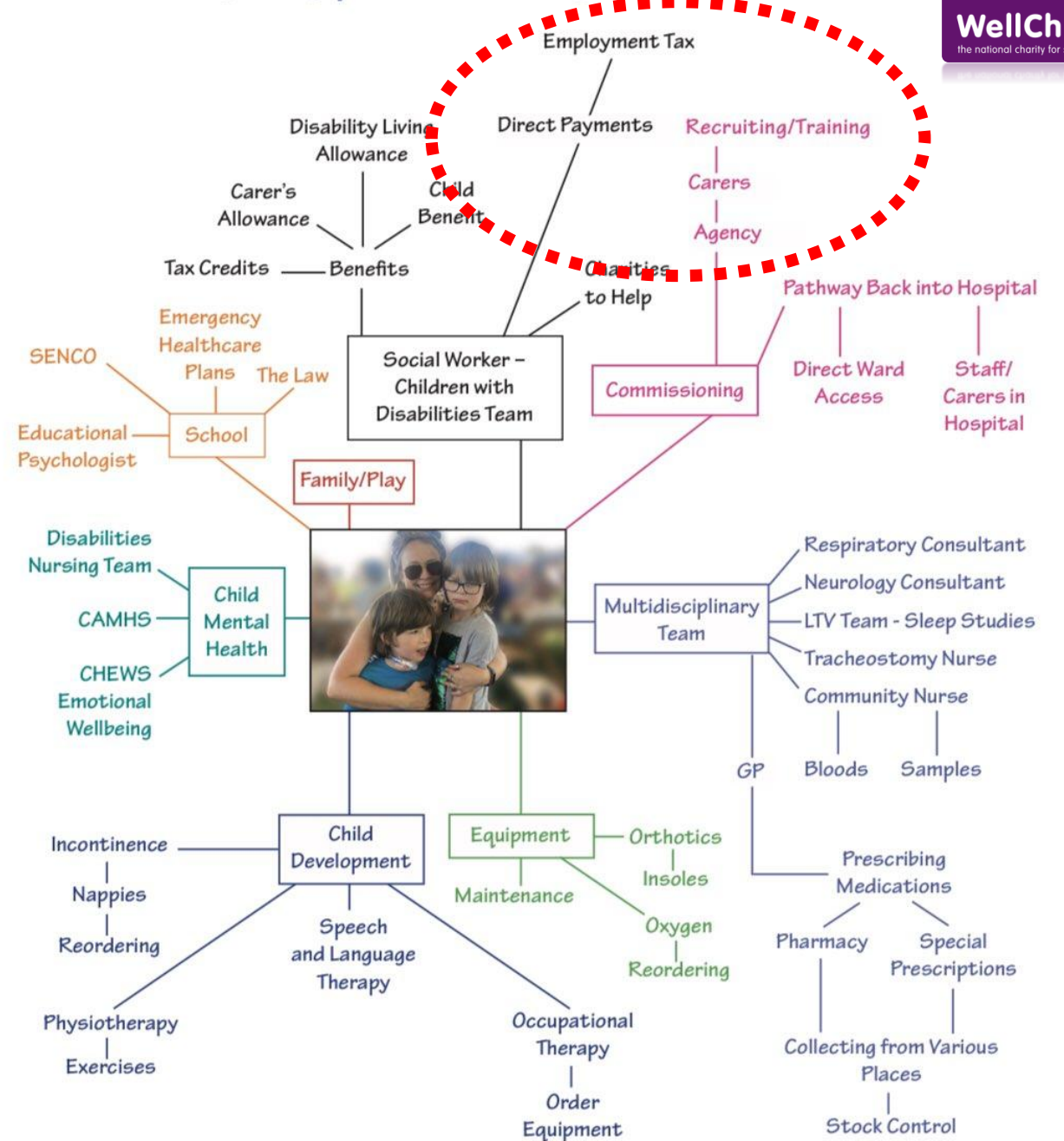


Personal Health Budgets



You're family

a young person on long-term ventilation



Our family





What is a Personal Health Budget?

What lot of parents believe it to be....

A **Direct Payment** – where you manage all the care/carers with a budget that's been given to you.

A **Personal Health Budget** is NHS money set aside to meet your child's health needs.

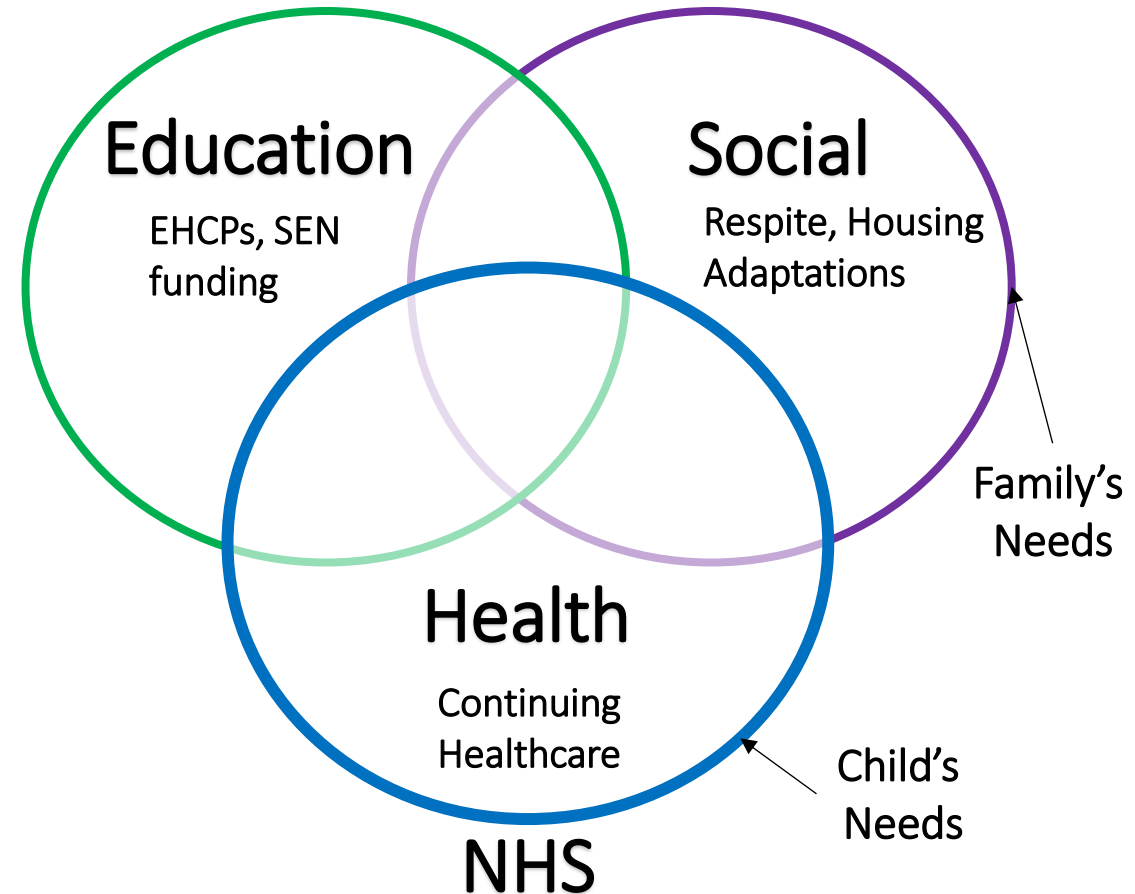
You agree how it is used and have a say in shaping care that works for your child and your family.

Who qualifies?

- ✓ if you have been assessed and qualify for NHS children & young people's continuing care or continuing health care
- ✓ if you receive aftercare services under section 117 of the Mental Health Act
- ✓ Qualify for a one-off budget to support you to achieve self-management eg hospital discharge, mental health recovery
- ✓ to support you if you have an education, health and care plan (EHCP) where there is health provision identified.

Who funds?

Local Authority

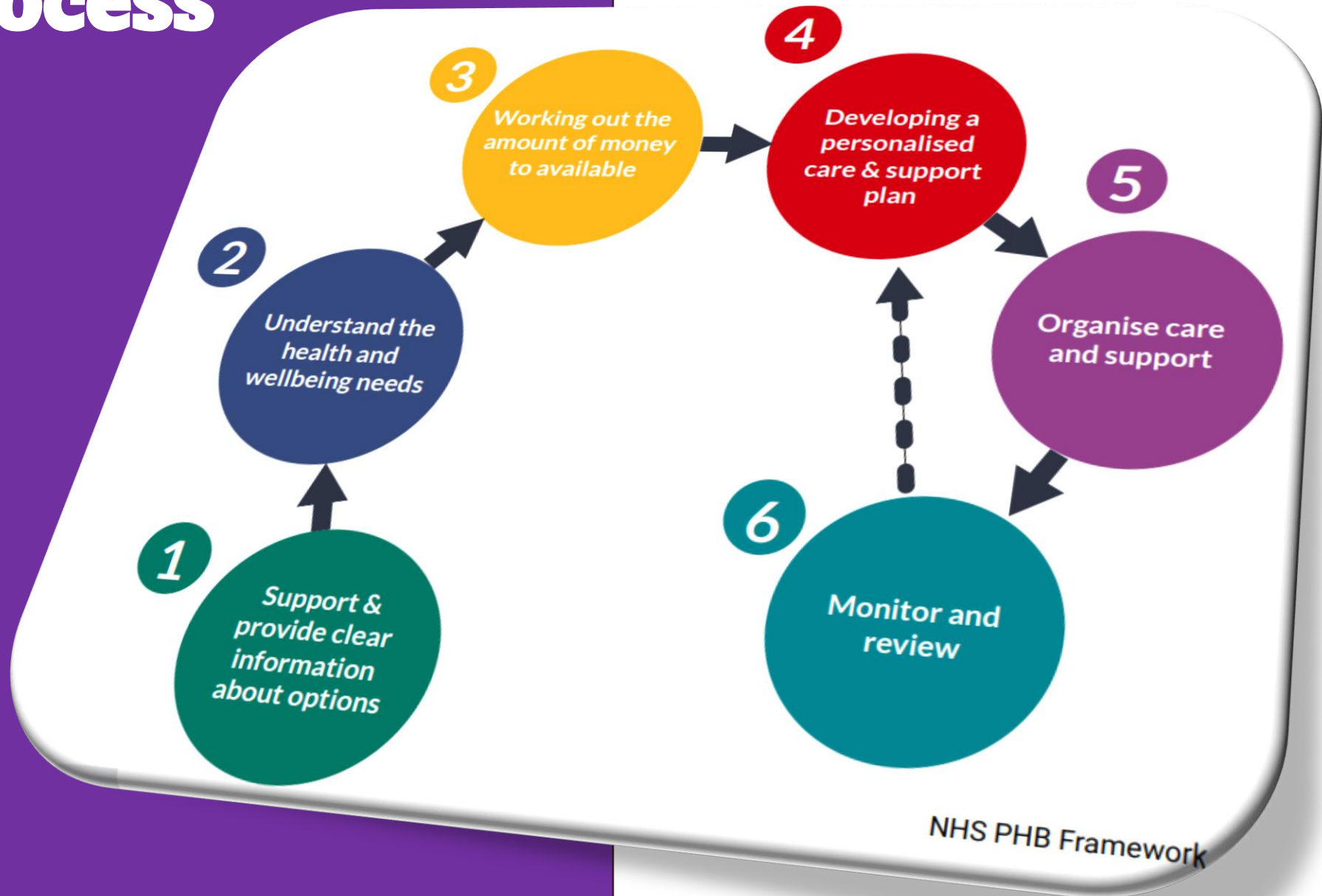


Are PHBs available in other parts of the UK?

- ✓ **England**
- ✓ **Wales**
- ✗ **Scotland**
- ✗ **Northern Ireland**



The Process



Core costs

Your Budget

Do you know you know what is included in your Personal Health Budget?

C) Cost that relate to my package of care and will be paid	
Item	Details & workings
School	Travel with 2:1 to/from school.
Travel (to/from) 2:1	2hrs * 5 days * 39 wks
<i>Outcome: 1</i>	
	8hrs (school day) * 5 days * 39 wks
Day Hours 2:1	* 2 carers (2:1)
<i>Outcome: 1</i>	
Non-Term Time	
Day Hours	75hrs per week * 13 weeks
<i>Outcome: 7-11</i>	
Night support	60hrs per week * 52 weeks
Respite	24 night per yr x 2:1 (48)
<i>Outcome: 7-11</i>	* £630 per night
Physiotherapy	2 (1hr) sessions per month (24hrs)
<i>Outcome: 7-11</i>	
Clinical oversight	Due to complexity of package, improved supervision over/above ICB for carers.
<i>Outcome: 7-11</i>	
Personal care / mobility	This are items that are required for Matthew's personal care and equipment. (e.g., wipes, nappies, batteries for portable medical equipment).
<i>Outcome: 14</i>	
PPE	This includes PPE required to keep Matthew, the family, and the staff clinical safe through infection (inc.

One-off/Yearly costs

A) Cost that will be paid to me as a one off payment upfront to help	
Item	Details & workings:
Care certificate	Anticipated additional 5 staff to cover usual staff movement and recruitment
<i>Outcome: 15-16</i>	
Recruitment	DBS
<i>Outcome: 15-16</i>	Advertisement
	Set up costs
	Shadow Shifts
Annual Training	Interactive Training Costs
<i>Outcome: 15-16</i>	Carer costs 25hrs x 15 carers (375 hrs) £17.01(inc on costs)ph
Physiotherapy	Initial 3hrs training / sign off (new starters) *5 @17.01
<i>Outcome: 7-11</i>	Physio competency sign off (5 carers)
	Annual refresher training (1hr) * 15
RN sign off	2 hrs per care plan (ventilation, tracheostomy and suctioning, gastrostomy) * 5 carers @ £100 ph
<i>Outcome: 15-16</i>	Annual refresher training (8hrs) x 15 carer @34.02 (weekend rate)
	Total one off direct payment costs:

Contingency costs

B) My contingency annual payment that will be held for cases of	
Item	Details & workings:
Emergency respite	
(parent illness, e.g., COVID)	2 weeks with 2:1 (150) hrs x 2 carers
<i>Outcome: 11</i>	
Contingency	5% of running costs (Section C)
<i>Outcome: 11</i>	
	Total contingency payment cost:

Employer costs

E) Costs that are required to allow safe delivery and monitoring	
Item	Details & workings
Software and licenses to run PHB package as an employer	Software licenses
<i>Outcome: 12-13</i>	- RotaCloud: Staff rotas
	- CQC Care Log software
	- Payroll
	- Contracts
	- MS office (care records, MAR charts, audit collection, checklists)
	- Anti-virus software
	Equipment for running PHB
	- Printing
	- Stationary
	Insurances
	Total cost of package running services:

A support plan is crucial to identify the outcomes that the individual wants to achieve. This will be reviewed alongside the budget to ensure all needs can be met.



Support Plan

What's important?



Personal Details

What people love about me!

I really like playing with my sister, my friends and my -----

Everyone says that I am cheeky and that I like to laugh at funny -----

I am a confident power chair user so I can be as -----

I can make my own decisions most of the time.

I have my own way of doing things, like my routine and for -----



Daily Routine



Decision Making – who, how?



What options do I have with a PHB?

A personal health budget is an amount of NHS money that is allocated to support your health and wellbeing needs.



Notional Budget



3rd Party Managed Budget



Direct Payment

Notional Budget

The money is held by the NHS.

Services are commissioned by the NHS according to the agreed personalised care and support plan.

It allows you to understand your budget, but the NHS remain in control of the money.

This means you have MINIMAL responsibility or control you have with your PHB.

NHS Stats (2024) : 80%

3rd Party Managed Budget

An organisation independent of the person, the local authority and NHS commissioners manage the budget.

They are responsible for ensuring the right care is put in place,

The organisation work in partnership with the person and their family to ensure the agreed outcomes can be achieved.

This option usually only provide for special cases, e.g. capacity, domestic abuse.

NHS Stats (2024) : 5%

Direct Payment

Direct Payments means that the money is paid to a person (or their representative or nominee) funded by the NHS

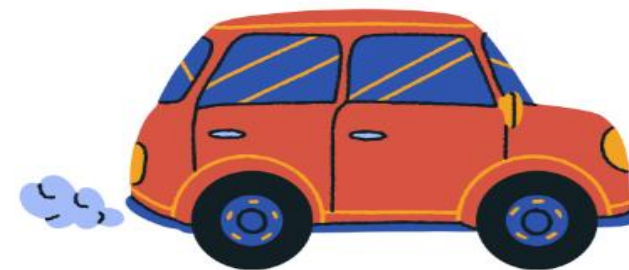
This allows them to purchase the services that are agreed in the personalised care and support plan.

This means you have MAXIMUM responsibility and control with your PHB.

Can achieve a more personalised approach to your PHB but more admin required.

NHS Stats (2024) : 15%

What are my PHB options, a different view



Notional Budget

Can be quicker to set up

+

Clinical resources

PHB managed

No consistency

-

No specialisation

No control

3rd Party Budget

Increased flexibility

+

Increased support

No consistency

-

Org. controlled

Direct Payment

Max flexibility

+

Care consistency

Full control

Financial responsibility

-

Ownership

Guidance and support

Finding Carers

Notional Budget / Package

Carers/PA's will be sourced from the agencies own pool of trained staff.

3rd party Budget / Package

Carers/PA's will be sourced by the 3rd party owning the package.

Direct Payments

Carers/PA recruitment and training is the responsibility of the parent/employer



Direct Payments

What can you achieve with the right PHB?



www.caringfamiliescic.co.uk



After this webinar

It would be great to get some feedback from the poll/questionnaire

Visit the Website

www.caringfamiliescic.co.uk

Find more information about Personal Health Budgets

Book a Support Call

COMING SOON

PHB Parent Support Hub – videos, help & support



THANK
YOU

Q & A